



Food Access in Fairbanks

Using Community Feedback to Illuminate Food Security in Fairbanks Low Income Areas

Aubree Pierce – Bread Line, Inc.

Fairbanks, AK



Food Security

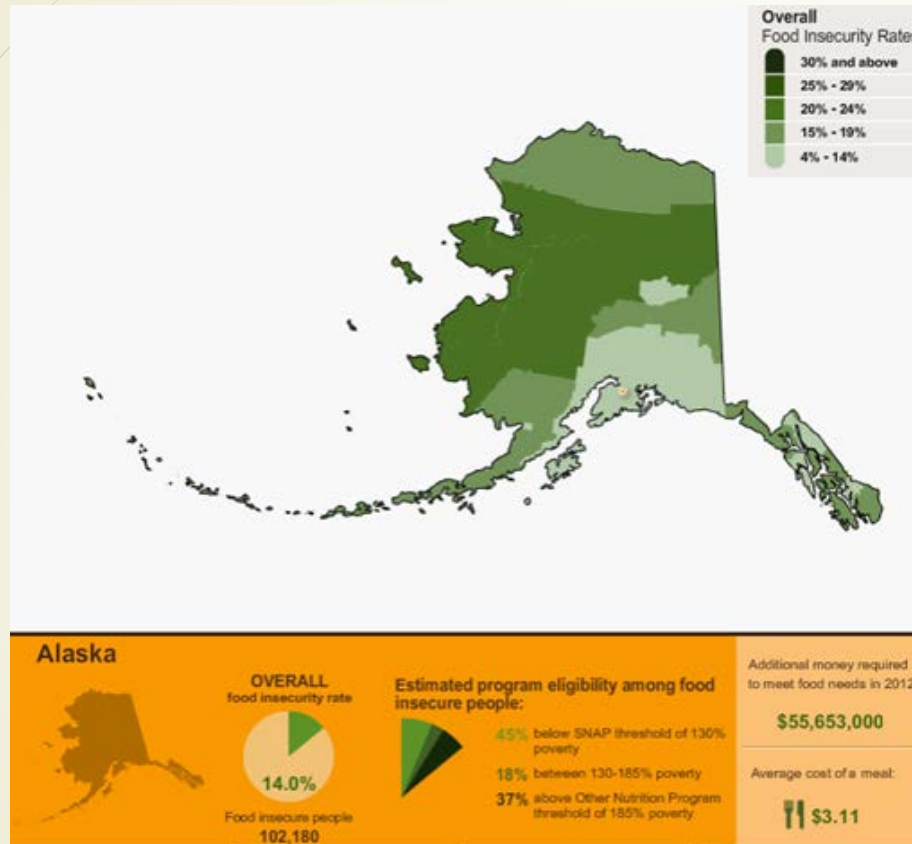
World Food Summit 1996:

Food security exists when all people at all times have access to sufficient, safe, nutritious food to maintain a healthy and active life.

USDA: Access by all people at all times to enough food for an active, healthy life.



Food insecurity in Alaska



Area	2012 Food Insecurity Rate
United States	14.50%
Alaska	14.00%
Anchorage Municipality	12.50%
Fairbanks North Star Borough	13.10%
Juneau City and Borough	11.40%
Matanuska-Susitna Borough	12.30%
Kenai Peninsula Borough	12.90%

"Food security includes not only availability of locally produced foods but also a mix of imported and exported food products... Alaska imports nearly all its food and is increasingly dependent on imported food."

Lewis, C., & Schlutt, F., 2011, Fairbanks Daily News Miner

What leads to Food insecurity among individuals?

- ▶ Homelessness
- ▶ Un- or Under-employment
- ▶ High housing costs
- ▶ Low wages
- ▶ Poverty
- ▶ Lack of Access to food Stamps
- ▶ Medical or health care bills
- ▶ Lack of transportation
- ▶ Food Deserts





What happens when people face hunger and food insecurity?

- ▶ Fatigue and/or illness related to hunger
- ▶ Lack of concentration at school or low work capacity at home or at work
- ▶ Pressure to go against held values in order to feed the family
- ▶ Disrupted household dynamics
- ▶ Relying on others or relying on credit to eat
- ▶ Irritability; anger in the home and with children
- ▶ Less time spent with families because of increased time required to procure food
- ▶ Parents depriving themselves to feed their children
- ▶ Stealing
- ▶ Panhandling



Bread Line, Inc.



*A 501 (C) 3 Non-Profit Organization Serving the Fairbanks Community
Since 1984*

Our core values: Collaboration, Human Affirmation, Inclusiveness, Sustainability, Nourishment

FEEDING PEOPLE-ENRICHING LIVES



What we offer

Stone Soup Cafe is a place for people who are hungry to come for a good hot meal in a warm safe place. In 2014, we served over 28,000 meals.



Stone's Throw is a 12 week culinary job skills training program for adults with barriers to employment.

The Stone Soup Garden Project provided over 500 pounds of produce for the cafe its first summer this year.



Kid's Cafe is a program where families come together to prepare food for our cafe guests on the third Saturday of each month from 11am-1pm.



Financials

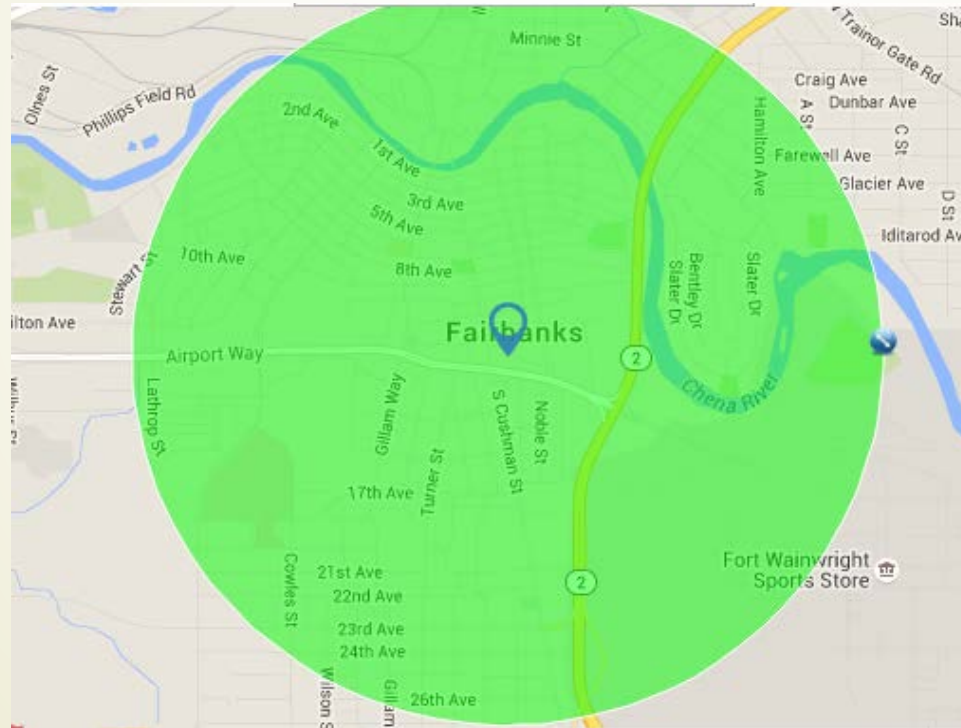
- ▶ We depend on the kindness of our neighbors —
- ▶ Funds come from
 - ▶ Individuals
 - ▶ Corporate donations and foundations
 - ▶ Fundraisers

“A social enterprise is an organization or initiative that marries the social mission of a non-profit or government program with the market-driven approach of a business.”

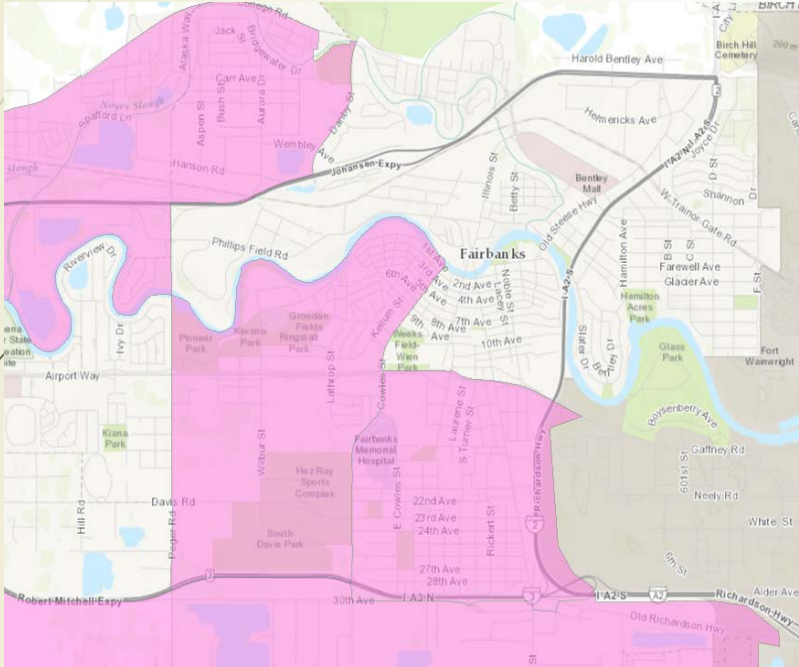
Social Enterprise Alliance, 2016

Community Food Access Survey

- ▶ 2015 Survey conducted by Bread Line staff to assess food needs and food security in low income areas in Fairbanks.
- ▶ Target area – 1 mile radius of Stone Soup Cafe

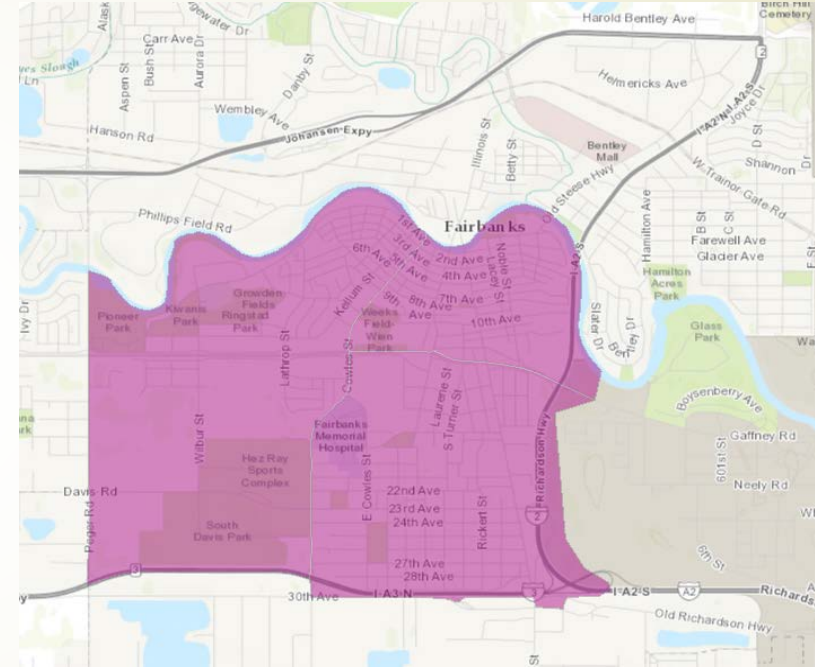


Food Availability in Fairbanks



Areas highlighted in pink indicate tracts in which at least 500 people or 33% of the population lives farther than 1 mile from the nearest supermarket.

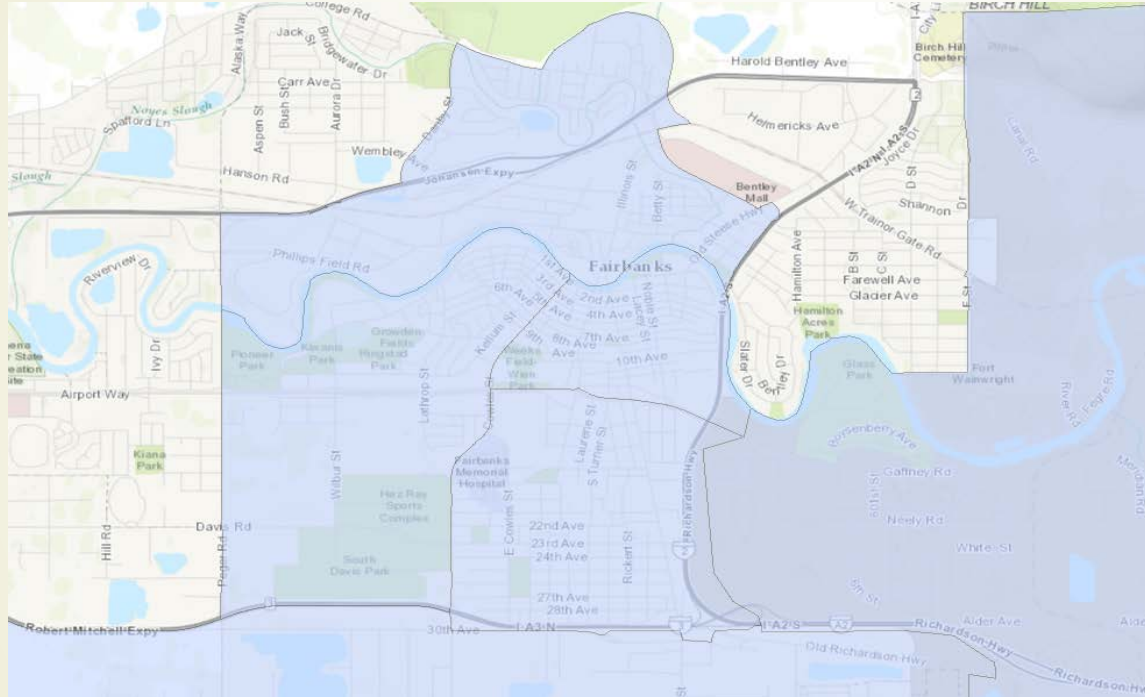
<http://www.ers.usda.gov/data-products/food-access-research-atlas/go-to-the-atlas>



Areas highlighted in purple indicate tracts in which more than 100 households have no access to a vehicle and are more than 1/2 mile from a supermarket.

<http://www.ers.usda.gov/data-products/food-access-research-atlas/go-to-the-atlas.aspx>

Low Income Areas in Fairbanks




Areas highlighted in blue indicate tracts with a poverty rate of 20% or higher or tracts with a median family income less than 80% of median family income for the state or metropolitan area.

<http://www.ers.usda.gov/data-products/food-access-research-atlas/go-to-the-atlas.aspx>



Survey Findings

- ▶ 253 surveys conducted
- ▶ 135 respondents lived within the target area - 1 mile radius of Stone Soup Café
- ▶ 42% food insecure within 1 mile radius
- ▶ 67 lived in “low-income” or subsidized housing
- ▶ 48% food insecure within low-income/subsidized housing
- ▶ 37% food insecure within 1 mile, not in low income/subsidized housing
- ▶ Fairbanks North Star Borough: 13.2%; State of Alaska 14%



Percentages calculated based on Column totals	All (253)	Within a 1 Mile radius (135)	Residents of Low Income Housing (67)	Within 1 mile, not in low income housing (68)	Food Insecure (91)
Food Insecure	36.0%	42.2%	47.8%	36.8%	--
Went 1 day without a meal in the last 12 months	17.8%	17.8%	23.9%	16.2%	47.3%
Received food assistance in the last 12 months	49.0%	60.7%	80.6%	41.2%	85.7%
Receive SNAP/EBT/Quest benefits	28.5%	36.3%	47.8%	25.0%	56.0%
Not enough food stamps to last	14.2%	20.7%	31.3%	10.3%	31.9%
Barrier: Food insolvency	59.7%	62.2%	64.2%	60.3%	84.6%
No regular transportation to grocery store	18.2%	20.0%	16.4%	22.1%	28.6%
Less than 1 serving of fruits or vegetables/day	22.9%	26.7%	34.3%	19.1%	41.8%

What do we do with this information? How can we collaborate?



Thank you!

Aubree Pierce

breadlinevista@gmail.com

907-452-1974

Stonesoupcafe.org

507 Gaffney Rd.

PO Box 73715

Fairbanks, AK 99707

